

OCTOBER 2021 | NEWSLETTER 06

# The Recycling Times



HADCO Group's Recycling Division Monthly E-Newsletter



## The dangers of lead and sulfuric acid

As we stated in our July e-blast, lead-acid batteries are some of the most commonly recycled items in the world. And for good reason too.

As crucial as lead-acid batteries are to our modern world, they also contain very harmful chemicals, so we must be conscious of how we dispose of them.

There are two main components of these batteries which can be harmful to the environment and human health: *lead and sulfuric acid*.

### How lead and sulfuric-acid affect the environment:

Both lead and sulfuric acid can contaminate solid and groundwater sources. These are important natural sources of water that are used for irrigation in the food industry and processed for drinking water.

Groundwater pollution is also dangerous to natural environments, endangering wildlife and posing a threat to biodiversity.

---

**"WE HELP YOU TO  
PROTECT YOUR  
COMPANY AND  
LOVED ONES  
BY SAFELY  
DISPOSING OF YOUR  
USED LEAD-ACID  
BATTERIES. "**

Kevin Whiteman -  
Managing Director,  
HADCO Group -  
Recycling Division

---

**More about the  
dangers below**

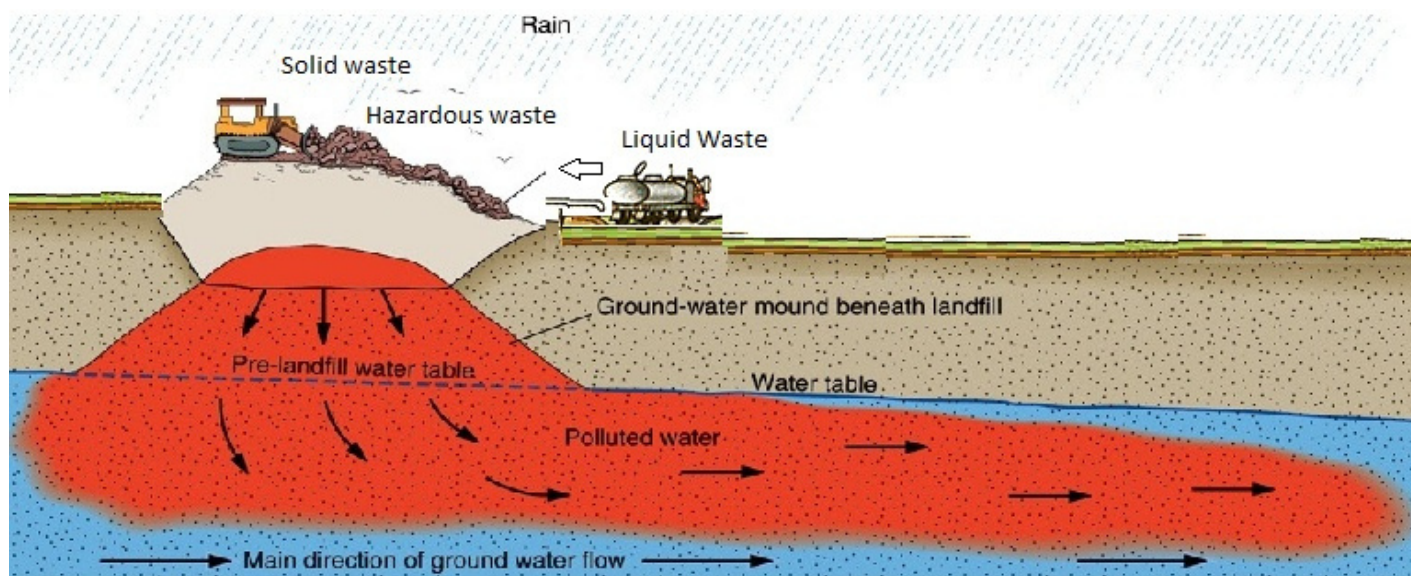


Diagram: How groundwater is contaminated. Source: [Scientific and Academic Publishing](#)

### How lead and sulfuric acid affect human health:

Sulfuric acid is highly corrosive and may cause chemical burns on our bodies and respiratory irritation if exposed to it.

Lead exposure has been linked to negative health effects in humans, especially amongst children. Side effects can include:

- Damage to the brain and nervous system
- Slowed growth and development

According to the CDC of America (Centers for Disease Control and Prevention), there is no safe level of lead exposure for children. Therefore, it is our responsibility to minimise irresponsible lead-acid battery disposal for the safety of ourselves and others.

More about the  
types of batteries  
we collect below



## Types of Batteries We Accept

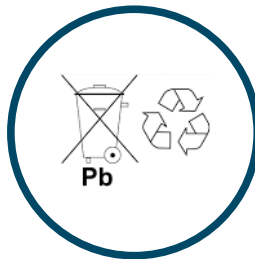
The most common kinds of lead-acid batteries we recycle are:

### Consumer car and truck lead-acid batteries

Lead-acid batteries found in vehicles such as sedans, flat panel trucks, vans and 4x4's.

### Industrial heavy machinery lead-acid batteries

Lead-acid batteries present in machines such as excavators, backhoe loaders, tractors and bulldozers.



**"ENSURE YOUR  
BATTERY IS  
LEAD-ACID  
BY LOOKING  
FOR THE  
'PB' SYMBOL  
ON YOUR BATTERY."**

Nicholas De Freitas -  
General Manager,  
HADCO Group -  
Recycling Division

## Drop-off Points and Request for Collection

Organisations and individuals interested in responsibly disposing of their used lead-acid batteries can contact us at:

Caribbean Battery Recycling: (868) 638-0242  
or visit [www.CaribbeanBatteryRecyclingTT.com](http://www.CaribbeanBatteryRecyclingTT.com)  
#2 El Socorro Ext, LP #52 Patraj Trace, San Juan,

Contact us to schedule a collection!

**For more information call (868) 638-0242  
or visit [www.CaribbeanBatteryRecyclingTT.com](http://www.CaribbeanBatteryRecyclingTT.com)**

